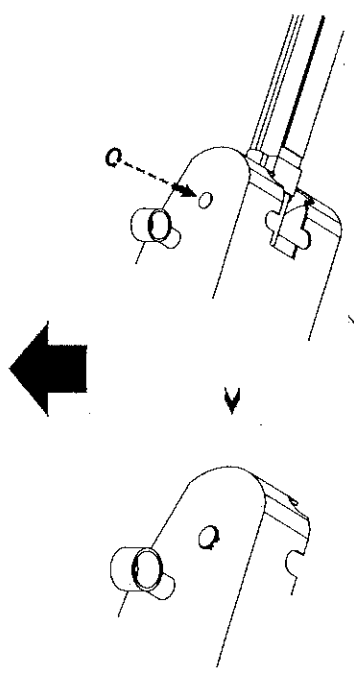
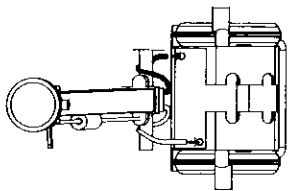
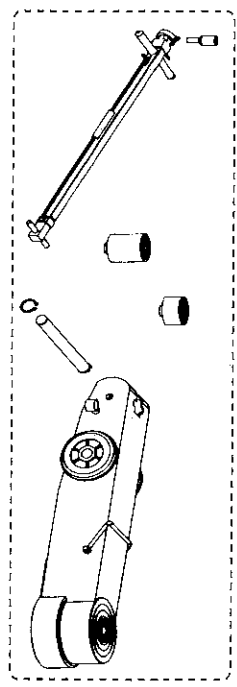


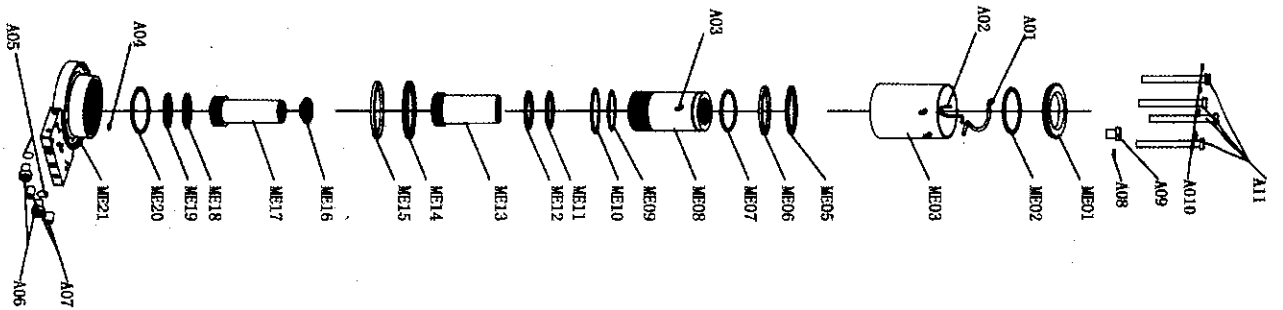
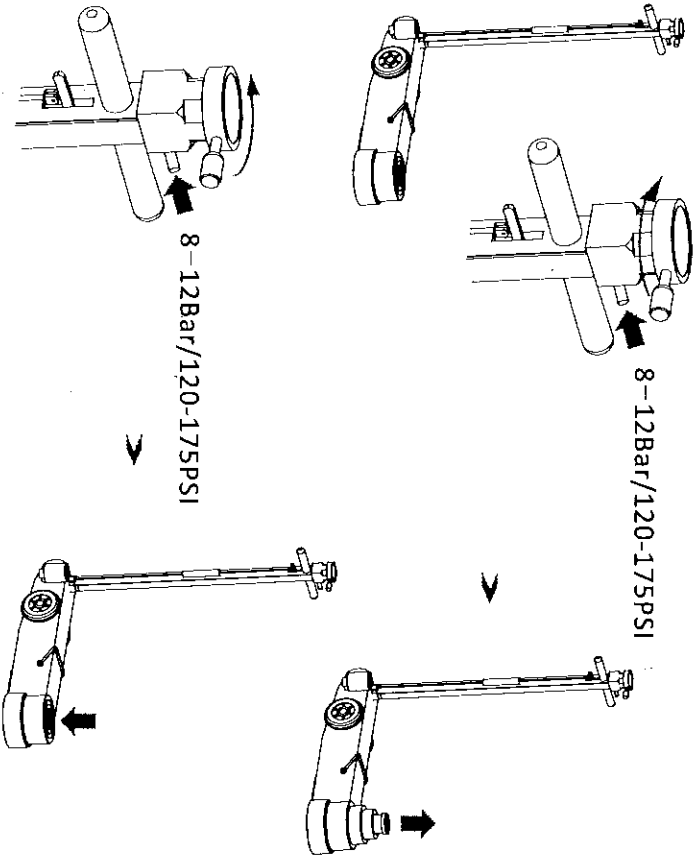
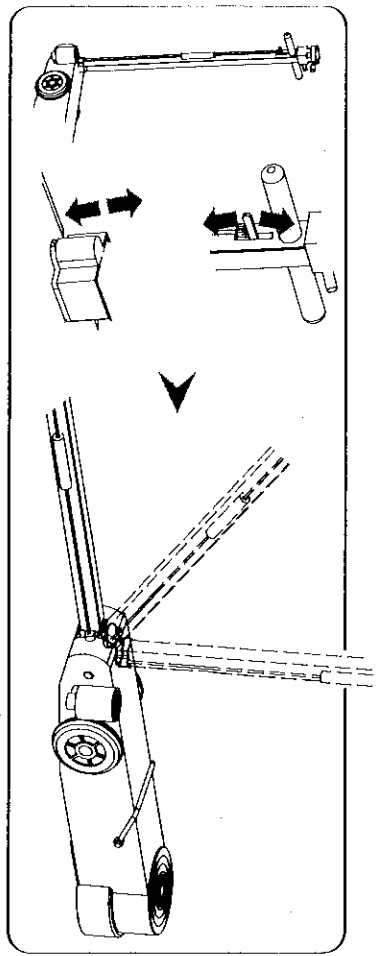
## Technical Data

Capacity:32T/16T  
Min height:150mm  
Max height:409mm  
Lifting height:32T:73mm 16T:66mm  
Extension height:100mm 45mm

Warranty terms (with a minimum of 12 months), service availability, and service response times may vary from country or region to country or region.

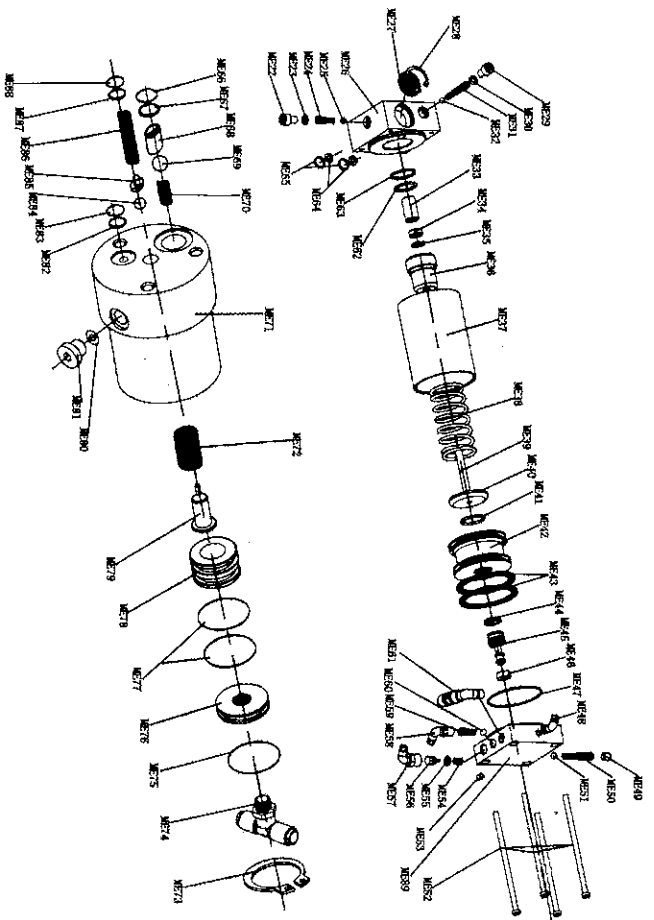


start



| NO.  | Description    |
|------|----------------|
| ME01 | Cover          |
| ME02 | O Ring         |
| ME03 | Oil Tank       |
| ME05 | Dustproof Ring |
| ME06 | Guide Ring     |
| ME07 | O Ring         |
| ME08 | Outer Sleeve   |
| ME09 | O Ring         |
| ME10 | Locking Ring   |
| ME11 | Dustproof Ring |
| ME12 | Guide Ring     |
| ME13 | Inner Sleeve   |
| ME14 | XTP            |
| ME15 | Guide Ring     |
| ME16 | Top Cover      |
| ME17 | Piston         |
| ME18 | XTP            |
| ME19 | Guide Ring     |
| ME20 | O Ring         |
| ME21 | Base           |

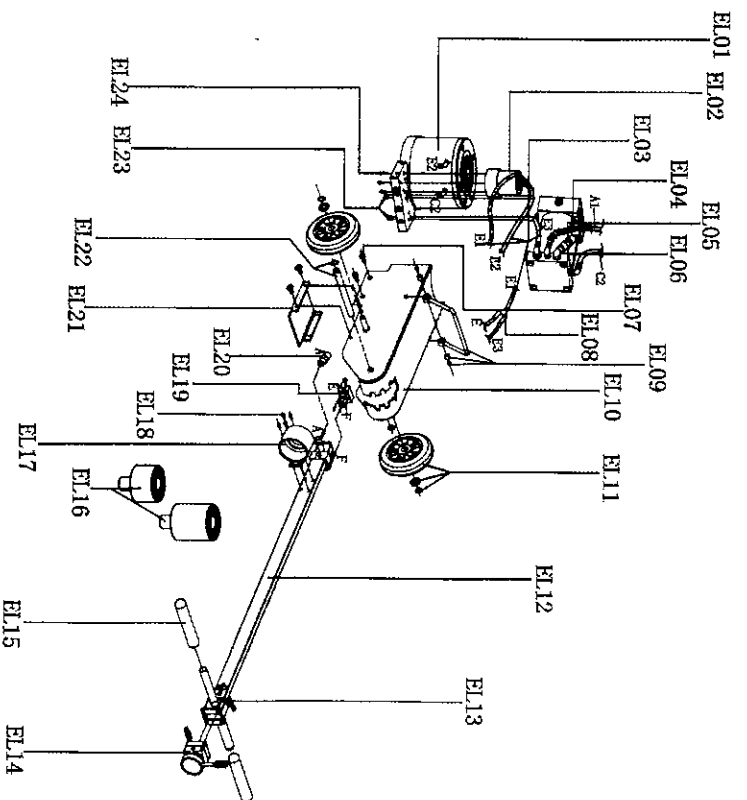
|     |            |
|-----|------------|
| A01 | Air Hose   |
| A02 | Air Hose   |
| A03 | Tie In     |
| A04 | Filter Net |
| A05 | O ring     |
| A06 | Screw Nut  |
| A07 | Screw      |
| A08 | O ring     |
| A09 | Screw Nut  |
| A10 | Spacer     |
| A11 | Screws     |



| NO.: | Description     |
|------|-----------------|
| ME22 | Screw Nut       |
| ME23 | O Ring          |
| ME24 | Spring          |
| ME25 | Steel Ball      |
| ME26 | Check Valve     |
| ME27 | Silencer Piece  |
| ME28 | Clamp           |
| ME29 | Screw Nut       |
| ME30 | O Ring          |
| ME31 | Spring          |
| ME32 | Steel Ball      |
| ME33 | Guide Bushing   |
| ME34 | Spacer          |
| ME35 | B3              |
| ME36 | Plunger Bushing |
| ME37 | Air Cylinder    |
| ME38 | Spring          |
| ME39 | Plunger Rod     |
| ME40 | Plunger Cover   |
| ME41 | O Ring          |
| ME42 | Piston          |
| ME43 | PK Sealing      |
| ME44 | OE Sealing      |

| NO.: | Description  |
|------|--------------|
| ME45 | Piston       |
| ME46 | Rubber Cap   |
| ME47 | O Ring       |
| ME48 | Tie In       |
| ME49 | Screw Nut    |
| ME50 | Spring       |
| ME51 | Rubber Ball  |
| ME52 | Screw        |
| ME53 | Screw Nut    |
| ME54 | Spring       |
| ME55 | O Ring       |
| ME56 | Piston       |
| ME57 | Tie In       |
| ME58 | Tie In       |
| ME59 | Spring       |
| ME60 | Rubber Ball  |
| ME61 | Tie In       |
| ME62 | O Ring       |
| ME63 | Locking Ring |
| ME64 | O Ring       |
| ME65 | Locking Ring |
| ME66 | O Ring       |
| ME67 | Locking Ring |

| NO.: | Description         |
|------|---------------------|
| ME68 | Steel Ball Bulkhead |
| ME69 | Steel Ball          |
| ME70 | Spring              |
| ME71 | Oil Drain Valve     |
| ME72 | Spring              |
| ME73 | Clamp               |
| ME74 | Tie In              |
| ME75 | O ring              |
| ME76 | End Cover           |
| ME77 | O ring              |
| ME78 | Oil Drain Piston    |
| ME79 | Oil Drain Bolt      |
| ME80 | O ring              |
| ME81 | Screw Nut           |
| ME82 | Locking Ring        |
| ME83 | O ring              |
| ME84 | Steel Ball          |
| ME85 | Screw Nut           |
| ME86 | Spring              |
| ME87 | Locking Ring        |
| ME88 | O ring              |
| ME89 | Air Inlet Base      |



| NO.  | Description          |
|------|----------------------|
| EL01 | Oil Cylinder Assy    |
| EL02 | Oil Drain Valve Assy |
| EL03 | Hose                 |
| EL04 | Spring               |
| EL05 | Pump Assy            |
| EL06 | Safe Valve           |
| EL07 | Screw                |
| EL08 | Tie In               |
| EL09 | Handle Sets          |
| EL10 | Tank                 |
| EL11 | Wheel Sets           |
| EL12 | Handle               |
| EL13 | Screw                |
| EL14 | Switch               |
| EL15 | Handle Grip          |
| EL16 | Adaptors             |
| EL17 | Adaptor Tray         |

| NO.  | Description       |
|------|-------------------|
| EL18 | Screws            |
| EL19 | Gas Circuit Block |
| EL20 | Tie In            |
| EL21 | Metal Plate       |
| EL22 | Wheel Axle Sets   |
| EL23 | Screws            |
| EL24 | Screws            |